

# ***Damper Hardware and Accessories***



OUTSIDE ILLINOIS CALL

***TOLL FREE 800-621-1207***

INSIDE ILLINOIS CALL 773-775-4477 FAX 773-775-5065

[www.ventfabrics.com](http://www.ventfabrics.com)

**VENTFABRICS**  
**I N C O R P O R A T E D**

5520 North Lynch Avenue • Chicago, Illinois 60630-1483

# Important Information

**Prices:** All prices net—no discount—subject to change without notice.

**Freight:** Prepaid on all orders of \$750.00 or more.

**Same-Day Shipment:** To expedite delivery, all shipments are regularly made the same day orders are received. All materials listed are available from Chicago.

**100% Cash Guarantee:** Any of our products considered unsatisfactory for any reason may be returned for full credit or cash refund within 12 months from date of sale, if the material is returned in the same condition as received. This provision does not apply to special orders calling for items not listed in our catalogues.

## ***Proposed Specifications For Consulting Engineers***

The following specifications for damper control hardware are suggested:

*“DUCT HARDWARE FOR MANUAL DAMPERS, SPLITTERS, ETC.”*

*Dampers with a shaft length of 12” or less should be equipped with VENTLOK #620 1/4” Dial Regulators; shaft lengths of 12” to 20” with VENTLOK #635 3/8” Dial Regulators and #607 End Bearings. Larger Dampers should be controlled with VENTLOK Self-Locking Regulators #640 or #641, and should be installed with #607 End Bearings.*

*Concealed ceiling dampers should be operated by means of VENTLOK #666 or #677 Concealed Damper Regulators. Where ceiling regulators must be flush mounted, VENTLOK #688 Exposed Damper Regulators should be used.*

*On duct with one inch insulation, VENTLOK #637 3/8” Elevated Dial Regulators should be used along with #607 End Bearings. Larger dampers should be controlled with VENTLOK Self-Locking #644 Regulators and should be installed with #607 End Bearings.*

For exceedingly large dampers or for those operating in high velocity air streams, where the most exact settings are required, or where flutter is a possibility, we suggest specifying VENTLOK #690 Damper Assemblies, which operate dampers from the tip rather than the heel. This assembly is shown on page 18. For high pressure systems we recommend dampers be equipped with our HVEL Damper Controls, along with End Bearings shown on page 9.

Of course, the above specifications can be modified in many ways, but by specifying VENTLOK damper control hardware, you will insure the use of the highest quality fittings designed for dampers in large ventilating and air conditioning installations.

## ***Other Ventfabrics Products***

In addition to the products listed in this catalog, we manufacture a complete line of fabrics, both plain and Metaledge for flexible connections in sheet metal ducts; VENTLOK latches, hinges and gasketing for the fabrication of sheet metal access doors and VENTLOK pre-fabricated stamped insulated access doors.

# Ventlok® Dial Regulators

ALL VENTLOK Regulators are made with a die cast core, a heavy gauge dial, a handle made from  $\frac{3}{32}$  inch steel, and a  $\frac{3}{4}$  inch hexagon nut. All steel parts are zinc plated and can be locked securely in place.

*Unlike most dial regulators and quadrants now available, which can be set with the turn of a thumb screw, VENTLOK controls cannot be tampered with, as a wrench is necessary to change the setting.*



620 VENTLOK  
1/4" DIAL REGULATOR

## 620 VENTLOK $\frac{1}{4}$ " DIAL REGULATOR

This regulator is recommended for use on small dampers. The center hole is  $\frac{17}{64}$  inches square to accommodate  $\frac{1}{4}$  inch square rod. You may order by sets or individual parts. A set consists of one dial regulator, one #620 square end bearing, and one #620 spring end bearing. *Weight per 100 sets, 26 lbs.*



635 VENTLOK  
3/8" DIAL REGULATOR

## 635 VENTLOK $\frac{3}{8}$ " DIAL REGULATOR

This regulator is recommended for medium size dampers. The center hole is  $\frac{25}{64}$  inches square to accommodate  $\frac{3}{8}$  inch square rod. The handle and dial are larger than those furnished with the #620. You may order by sets or individual parts. A set consists of one dial regulator, one #635 Square End Bearing, and one #635 Spring End Bearing. *Weight per 100 sets, 46 lbs.*

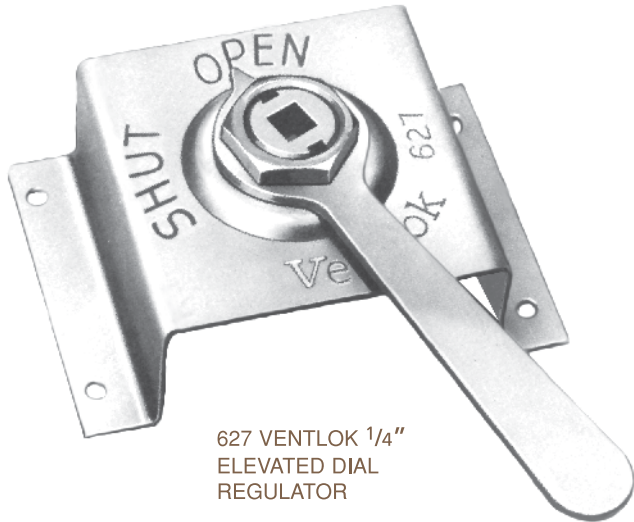


635 SPRING  
END BEARING



635 SQUARE  
END BEARING

# 1/4" Elevated Dial Regulators



627 VENTLOK 1/4"  
ELEVATED DIAL  
REGULATOR

## 627 VENTLOK 1/4" ELEVATED DIAL REGULATOR FOR 1" INSULATION

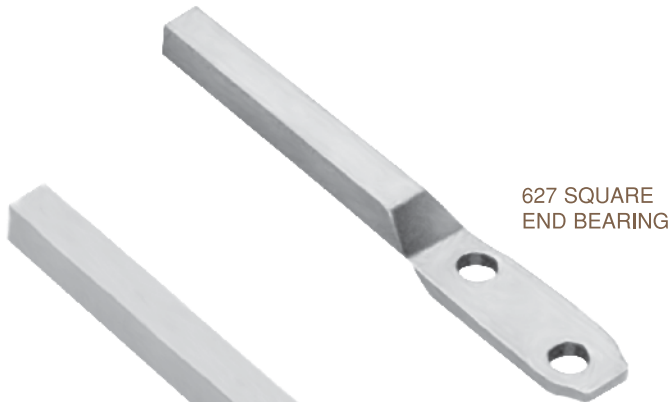
This regulator is similar to our standard #620 Regulator except that it is on an elevated platform 1 1/8" high for use on insulated ducts.

You may order by sets or individual parts. A set consists of one elevated dial regulator, one #627 square end bearing, which has a 2" long shaft and one standard #620 spring end bearing. *Weight per 100 sets, 45 lbs.*

## 628 VENTLOK 1/4" ELEVATED DIAL REGULATOR FOR 1 1/2" INSULATION

This regulator is the same as our #627, except that the platform is 1 5/8" high.

You may order by sets or individual parts. A set consists of one elevated dial regulator, one #627 square end bearing, which has a 2" long shaft and one standard #620 spring end bearing. *Weight per 100 sets, 50 lbs.*

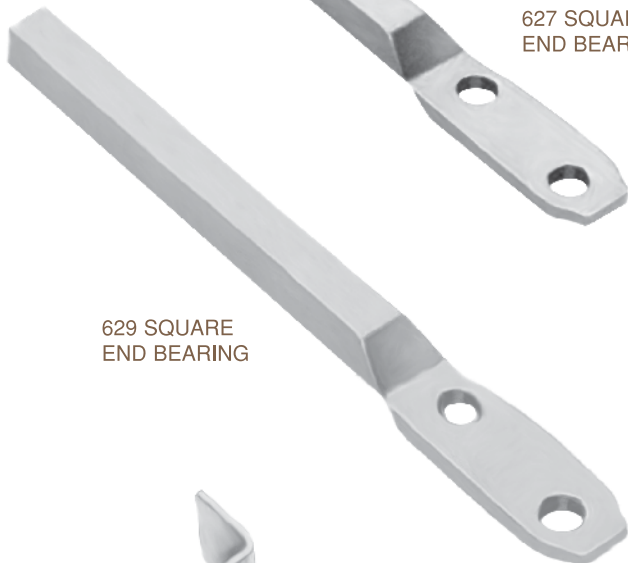


627 SQUARE  
END BEARING

## 629 VENTLOK 1/4" ELEVATED DIAL REGULATOR FOR 2" INSULATION

This regulator is the same as our #627, except that the platform is 2 1/8" high.

You may order by sets or individual parts. A set consists of one elevated dial regulator, one #629 square end bearing, which has a 4 1/2" long shaft and one standard #620 spring end bearing. *Weight per 100 sets, 70 lbs.*



629 SQUARE  
END BEARING

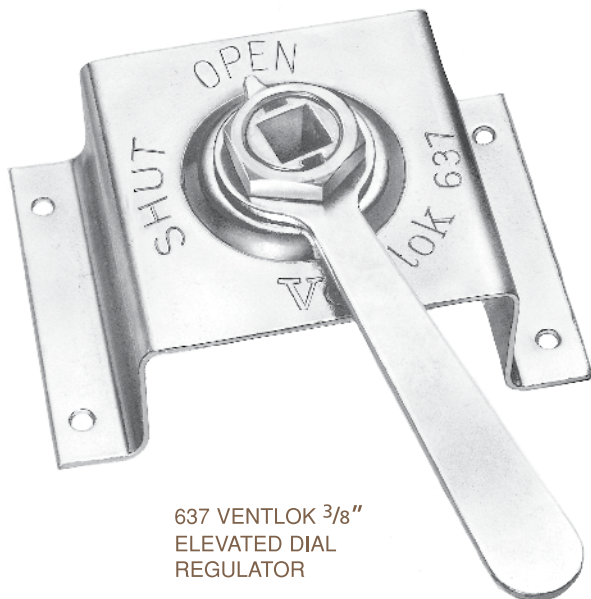


626 LONG SPRING  
END BEARING

## 626 LONG PIN SPRING END BEARING

This spring end bearing is designed for use on dampers in ducts insulated on the inside. The pin is one inch longer than our standard #620 spring end bearing, so that when released the pin extends 1 5/8 inches beyond the pin holder. *Weight per 100, 7 lbs.*

## **3/8" Elevated Dial Regulators**



637 VENTLOK 3/8"  
ELEVATED DIAL  
REGULATOR

### **637 VENTLOK 3/8" ELEVATED DIAL REGULATOR FOR 1" INSULATION**

This regulator is similar to our standard #635 regulator except that it is on an elevated platform 1 1/8" high for use on insulated ducts.

You may order by sets or individual parts. A set consists of one elevated dial regulator, one #637 square end bearing which has a 2 1/4" shaft and one standard #635 spring end bearing.

*Weight per 100 sets, 64 lbs.*

### **638 VENTLOK 3/8" ELEVATED DIAL REGULATOR FOR 1 1/2" INSULATION**

This regulator is the same as our #637 regulator except that the platform is 1 5/8" high.

You may order by sets or individual parts. A set consists of one elevated dial regulator, one #637 square end bearing which has a 2 1/4" shaft and one standard #635 spring end bearing.

*Weight per 100 sets, 68 lbs.*



637 SQUARE  
END BEARING



639 SQUARE  
END BEARING

### **639 VENTLOK 3/8" ELEVATED DIAL REGULATOR FOR 2" INSULATION**

This regulator is the same as our #637 except that the platform is 2 1/8" high.

You may order by sets or individual parts. A set consists of one elevated dial regulator, one #639 square end bearing which has a 3" long shaft and one standard #635 spring end bearing.

*Weight per 100 sets, 72 lbs.*

### **636 LONG PIN SPRING END BEARING**

This spring end bearing is designed for use on dampers in ducts insulated on the inside. The pin is one inch longer than our standard #635 spring end bearing, so that when released the pin extends 1 5/8 inches beyond the pin holder. *Weight per 100, 14 lbs.*

636 LONG SPRING  
END BEARING



# Ventline Square Rod Quadrants

## 555 QUADRANTS FOR USE WITH $\frac{3}{8}$ " OR $\frac{1}{2}$ " SQUARE ROD

Our #555 quadrants, available in  $\frac{3}{8}$ " or  $\frac{1}{2}$ " sizes, are made with a base plate of 16 Ga. cold rolled steel and a heavy die cast. A  $\frac{1}{4}$ " x 20 zinc plated wing nut firmly locks the handle in place. *Weight per 100, 42 lbs.*

## 555 STAINLESS STEEL VENTLINE QUADRANT

These quadrants are identical to those described above with the exception that the quadrant plate and the locking nut are made from stainless steel. The die cast handle is made from a non-corrosive alloy of zinc and aluminum. This quadrant is available to accommodate  $\frac{3}{8}$ " or  $\frac{1}{2}$ " rod. *Weight per 100, 44 lbs*

Should square or spring end bearings be desired for the #555  $\frac{3}{8}$ " quadrant, we suggest using our #635 stainless steel spring and square end bearings shown on page 3.



555 QUADRANTS

# Ventline Round Rod Quadrants

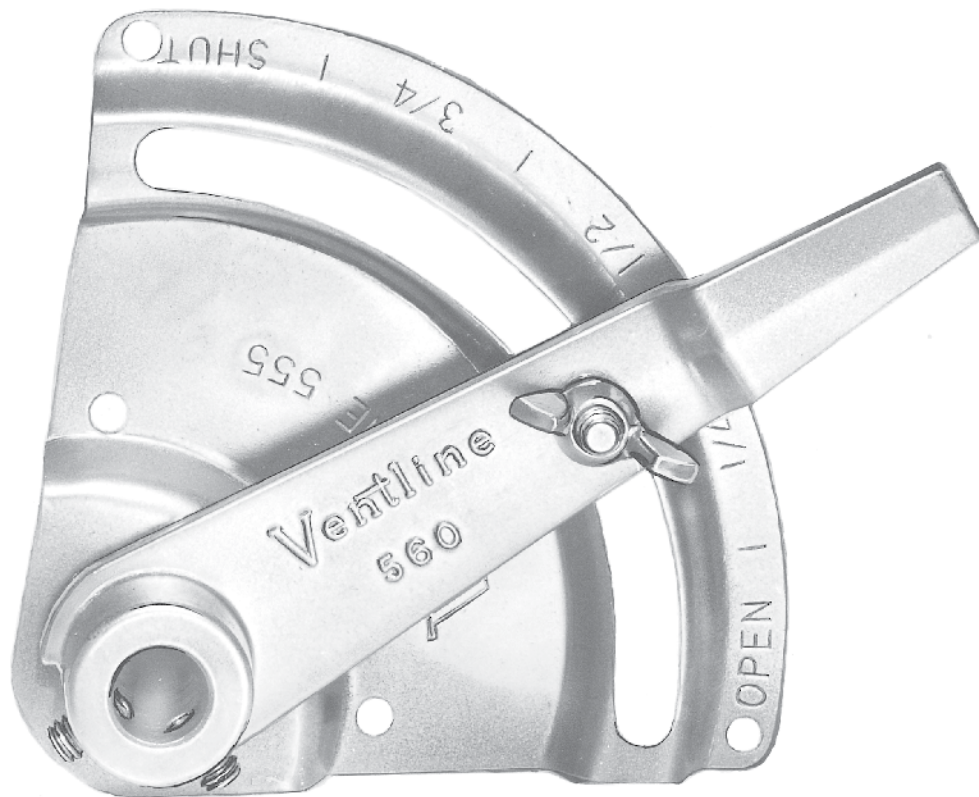
## 560 QUADRANT FOR USE WITH 1/2" ROUND ROD

This quadrant is the only one we manufacture to accommodate 1/2" round rod. The heavy die cast handle is designed with two 1/4" socket head set screws to tighten against the bearing pin to insure no slippage. *Weight per 100, 50 lbs.*

## 560 STAINLESS STEEL VENTLINE QUADRANT

Our #560 Round Quadrant is also available with all stainless steel pieces with the exception of the die cast handle which is made from a non-corrosive alloy of zinc and aluminum. *Weight per 100, 52 lbs.*

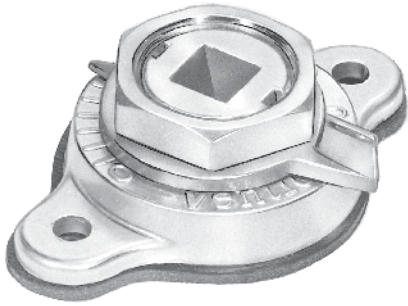
**NOTE:** Both quadrant plates are now available with reverse markings. When ordering if you wish the open shut etc. markings to be reversed, designate it by placing an "R" after the style number. *Galvanized plates only.*



560 QUADRANTS

# Self-Locking Damper Controls

## 640 VENTLOK SELF-LOCKING REGULATOR



640 VENTLOK SELF  
LOCKING REGULATOR

This regulator, which consists of three precisely fitted die castings, a flat spring and a heavy locking nut, is designed for use on large dampers.

The die cast core is made with 120 serrations which engage the teeth inside the escutcheon when the flat spring separating the two pieces is compressed by tightening the locking nut. This locking device eliminates any possibility of unwanted movement. The indicator not only shows the position of the damper blade once it is locked, but also makes it possible to hold the damper in the exact position desired while the locking nut is being tightened.

The #640 Damper Regulator is made to accommodate either  $\frac{3}{8}$ " or  $\frac{1}{2}$ " square rod. Gasket furnished. *Weight per 100, 22 lbs.*



641 VENTLOK SELF  
LOCKING REGULATOR

## 641 VENTLOK SELF-LOCKING REGULATOR

This regulator is the same as the #640, except that a heavy steel stamped handle is substituted for the indicator. This piece is also made to accommodate  $\frac{3}{8}$ " or  $\frac{1}{2}$ " square rod. Gasket furnished. *Weight per 100, 32 lbs.*



607 VENTLOK  
END BEARING

## 607 VENTLOK OPEN END BEARING

Accommodates  $\frac{3}{8}$ " or  $\frac{1}{2}$ " square rod.  
Gasket furnished. *Weight per 100, 12 lbs.*



617 VENTLOK  
AIR STOP

## 617 AIR STOP

This is a 2 piece product made up of a metal plate and a rubber gasket in the middle. The gasket can be order in  $\frac{1}{4}$ ",  $\frac{3}{8}$ " and  $\frac{1}{2}$ " sizes, and accommodates a square or round rod. It acts as an alternative to our 607 and 609 Hivel. It is available in Stainless Steel.



# HiVel Ventlok Hardware For High Pressure Ducts

This hardware for high pressure ducts is sold under our brand name HiVel. Our regulators and controls are made air tight by substituting a brass acorn nut for the hex nut. In addition, a mounting gasket is furnished with each piece. HiVel is available in the following styles: #620, #635, #640, #641, #644.

## 609 HIVEL VENTLOK DAMPER END BEARING

This end bearing is designed specifically for use on high pressure ducts. It has a closed end so that no leakage can take place through the core. A mounting gasket is furnished. This bearing can be purchased to accommodate  $\frac{3}{8}$ " or  $\frac{1}{2}$ " square rod. *Weight per 100, 16 lbs.*



641 HIVEL  
DIAL REGULATOR



609 HIVEL  
END BEARING

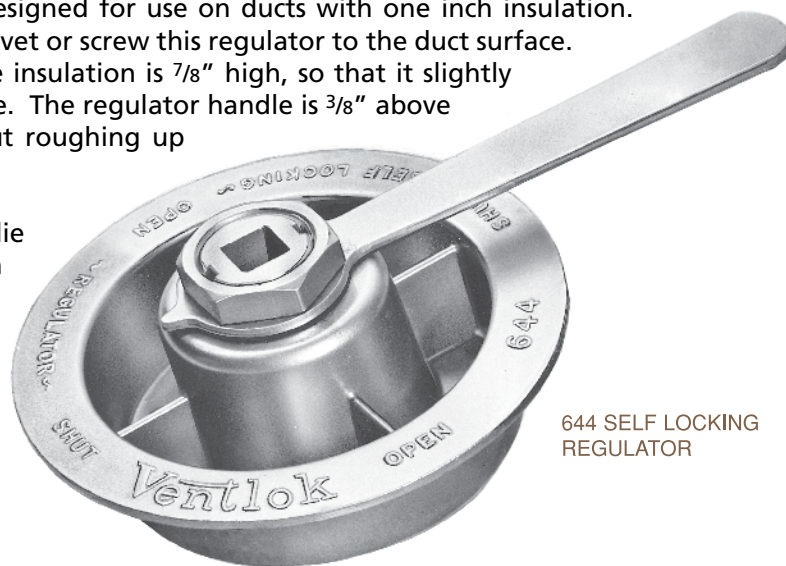
## Self Locking Damper Controls

### 644 SELF LOCKING REGULATOR FOR INSULATED DUCT WORK

This regulator,  $4\frac{1}{4}$ " in diameter, has been designed for use on ducts with one inch insulation. Four holes,  $\frac{3}{16}$ " in diameter are provided to rivet or screw this regulator to the duct surface. The flange which covers the raw edge of the insulation is  $\frac{7}{8}$ " high, so that it slightly compresses the insulation and holds it in place. The regulator handle is  $\frac{3}{8}$ " above the flange, and can be turned easily without roughing up the insulation.

As in our other self locking regulators, the die cast core is made with 120 serrations which engage the teeth in the cover when the flat spring separating the two pieces is compressed by tightening the locking nut.

The #644 regulator is made to accommodate either  $\frac{3}{8}$ " or  $\frac{1}{2}$ " square rod. *Weight per 100, 84 lbs.*



644 SELF LOCKING  
REGULATOR

# Self-Locking Damper Controls

## 666 VENTLOK CONCEALED DAMPER REGULATOR

This piece consists of our #640 Damper Regulator cast into a box for mounting in ceilings. The base is 2<sup>7</sup>/<sub>8</sub>" in diameter, and the cover is 3<sup>3</sup>/<sub>4</sub>" in diameter. The base is <sup>7</sup>/<sub>8</sub>" deep, but the cover telescopes into the base, which allows for an expansion of <sup>1</sup>/<sub>2</sub>". The cover is secured by two screws which can be easily removed for adjustment of the damper.

This self-locking regulator is made to accommodate <sup>3</sup>/<sub>8</sub>" or <sup>1</sup>/<sub>2</sub>" square rod, and the cover is available either in the natural zinc suitable for painting, or chrome plated.

*Weight per 100, 75 lbs.*



666 VENTLOK CONCEALED  
DAMPER REGULATOR

## 677 VENTLOK CONCEALED DAMPER REGULATOR

This piece is similar to our #666 Concealed Damper Regulator except the base is 2<sup>5</sup>/<sub>16</sub>" in diameter, and the cover is 2<sup>5</sup>/<sub>8</sub>" in diameter and telescopes into the base, which is 1<sup>1</sup>/<sub>2</sub>" deep. The cover is secured by two screws which can be removed easily for adjustment of the damper.

This self locking regulator is made to accommodate <sup>3</sup>/<sub>8</sub>" or <sup>1</sup>/<sub>2</sub>" square rod. When ordering, be sure to specify plain or chrome plated cover. *Weight per 100, 70 lbs.*



677 VENTLOK CONCEALED  
DAMPER REGULATOR

## 688 VENTLOK EXPOSED DAMPER REGULATOR

This is a completely chrome plated model for mounting on ceilings, walls, and other exposed areas. The base of the regulator is 3 <sup>1</sup>/<sub>8</sub>" in diameter and made to accommodate a full inch of rod.

Like our #666 and #677, this self-locking regulator is made to accommodate <sup>3</sup>/<sub>8</sub>" or <sup>1</sup>/<sub>2</sub>" square rod. *Weight per 100, 60 lbs.*



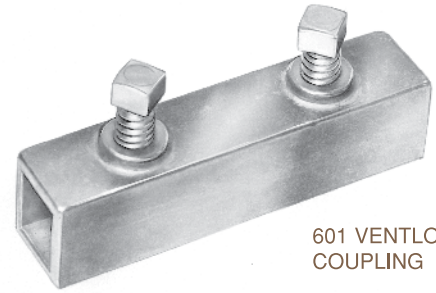
688 VENTLOK EXPOSED  
DAMPER REGULATOR

# Accessories

## COUPLINGS

### 601 VENTLOK COUPLING

Designed to join two lengths of  $\frac{3}{8}$ " square rod. Two square head  $\frac{1}{4}$ " set screws furnished. *Weight per 100, 16 lbs.*



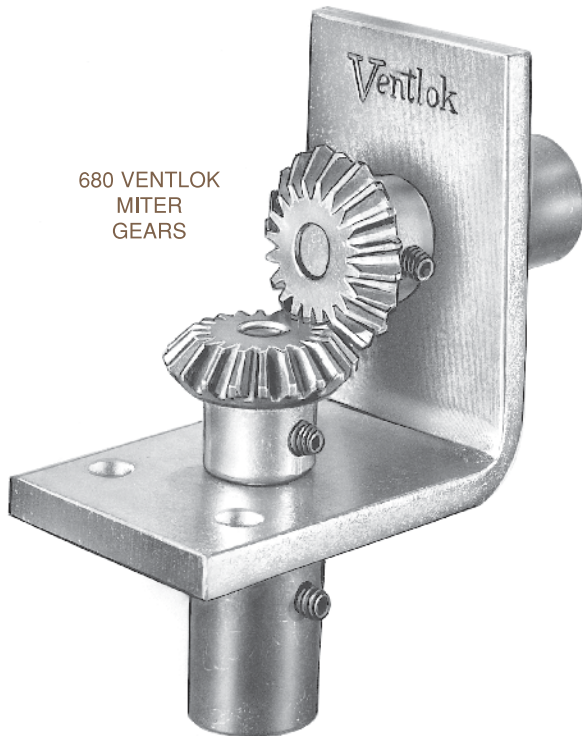
601 VENTLOK  
COUPLING

### 602-A COUPLING

This piece will couple  $\frac{3}{8}$ " square rod to  $\frac{3}{8}$ " round rod. *Weight per 100, 12 lbs.*

### 602-B COUPLING

This piece will couple  $\frac{3}{8}$ " square rod to  $\frac{1}{2}$ " round rod. *Weight per 100, 12 lbs.*



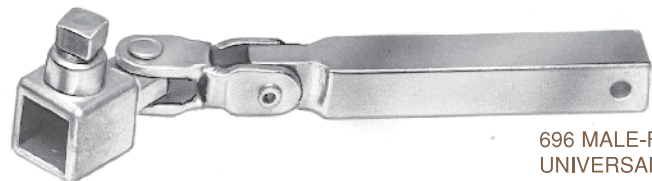
680 VENTLOK  
MITER  
GEARS

## 680 VENTLOK MITER GEARS

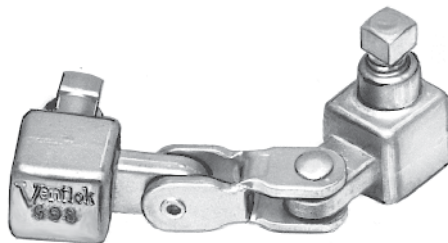
VENTLOK Miter Gears are used only in those installations where it is necessary to make a right angle turn in the operating rod of a damper. The miter gears are set in a zinc plated steel angle,  $\frac{1}{4}$ " thick.

These die cast gears are  $1\frac{1}{4}$ " in diameter and are constructed with self-lubricating bronze bushings to insure free movement.

VENTLOK Miter Gears are made for manual use only and available in two sizes, to accommodate  $\frac{1}{2}$ " or  $\frac{3}{8}$ " square rod. *Weight per 100, 125 lbs.*



696 MALE-FEMALE  
UNIVERSAL JOINT



695 DOUBLE FEMALE  
UNIVERSAL JOINT

## UNIVERSAL JOINTS

Universal joints can prove most useful when it is necessary to make an offset in the control rod to avoid some obstacle. However, such a linkage is not effective when the two ends of the joint are twisted at an angle greater than  $30^\circ$ .

These joints are made for  $\frac{3}{8}$ " square rod.

695—Double Female Universal Joint.

*Weight per 100, 12 lbs.*

696—Male-Female Universal Joint.

*Weight per 100, 16 lbs.*



# Splitter Damper Controls

## 600-3 VENTLOK SPLITTER DAMPER SET

This set consists of one #600 Damper Blade Bracket, and one #603 1/4" Ball Joint Bracket. By using these two pieces of hardware, you can easily and economically make a splitter damper.

Available for use with 1/4" rod only. *Weight per 100, 32 lbs.*

### INDIVIDUAL PARTS

#### 600 DAMPER BLADE BRACKET

*Weight per 100, 16 lbs.*

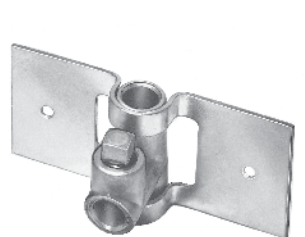
#### 603 1/4" BALL JOINT BRACKET

*Weight per 100, 16 lbs.*

#### 603 5/16" BALL JOINT BRACKET

(Cannot be used in conjunction with #600 bracket)

*Weight per 100, 16 lbs.*



600 DAMPER  
BLADE BRACKET



603 VENTLOK BALL  
JOINT BRACKET

## 690 SELF-LOCKING SPLITTER DAMPER ASSEMBLY

This assembly permits operating splitter dampers from the toe, rather than the heel. This is often desirable on large dampers where fluttering is a possibility caused by high velocity, etc. It is also a recommended substitute for the more conventional push-pull rod type control where space limitations may be a problem.

The damper is controlled by turning the handle which causes the damper blade to travel along the zinc plated 3/8" threaded rod at the rate of one inch for every five turns. The damper control, which is the self locking type, is fixed by tightening the hexagonal brass acorn nut. After the damper is in the desired position it is possible to remove the handle to discourage any tampering.

After cutting the threaded rod to the desired length, it is important that the end be mutilated in order to prevent the threaded traveling plate from becoming disengaged.

## 691 ABBREVIATED SELF LOCKING SPLITTER DAMPER ASSEMBLY

This abbreviated model of our #690 is adaptable to most of our 3/8" regulators. The assembly is virtually the same as shown above minus the handle and brass nut.



690 SELF LOCKING SPLITTER  
DAMPER ASSEMBLY

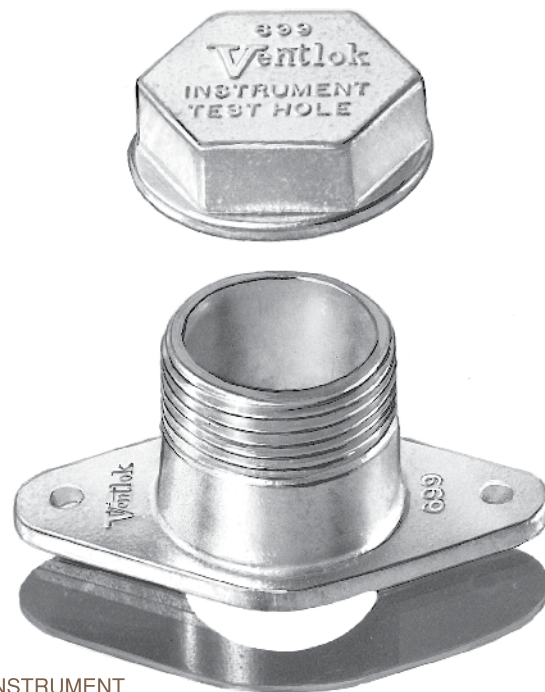


# Accessories

## 699 INSTRUMENT TEST HOLES

These test holes make it easy and economical to provide openings for Pitot tubes and other test instruments, to measure static pressures and air velocities. The hole is sealed off with a heavy screw cap and gasket. Unless otherwise specified a flat gasket is supplied to prevent air leakage around the base. For an extra charge, special gaskets are available to adapt these test holes to round duct. *Weight per 100, 36 lbs.*

These test holes are now available in two sizes: #699 with a total height of 1<sup>5</sup>/<sub>8</sub>" will accommodate one inch of insulation, #699-2 with a total height of 2<sup>5</sup>/<sub>8</sub>" is made for two inches of insulation. *Weight per 100, 48 lbs.*



699 INSTRUMENT  
TEST HOLE

## 425 VENTLOK MOLDED GASKETING

This innovative gasketing has many properties that make it extremely useful on new dampers or in retrofitting dampers that have lost their effectiveness due to air leakage. Because of its unusual construction, this gasketing can be slipped over the edge of a damper blade and the three teeth in the molding have a fish-hook effect which holds the gasketing firmly in place.

Since this material is made from poly-vinyl chloride, or PVC, it cannot be used in installations where temperatures exceed 160°F or -40°. Also, it is not recommended for use on metal heavier than 16 ga.



425 MOLDED  
GASKETING

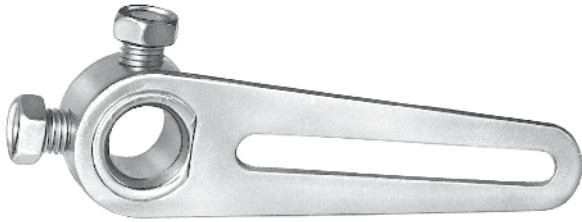
This gasketing is available in 6 or 8 ft. lengths. *Weight per 100, 24 lbs. and 31 lbs. respectively.*

## 426 VENTLOK DAMPER JAMBSEAL

Jambseal is made from 1 1/2" wide Urethane sponge gasketing with an adhesive backing. In order to reduce air leakage to the absolute minimum, this material can be applied to the jamb of the damper to prevent leakage between the metal frame and the damper blades. Holes can be punched in the Jambseal to accommodate the bearing pins supporting the damper blades. Also, if the top and bottom blades which close against the damper frame do not make proper contact, a strip of Jambseal will usually solve the problem.

Jambseal is available in 50-foot rolls 1 1/2" wide x 1/8" or 3/16" thick. *Weight per 50-foot roll, 3/4 lb.*

# Accessories



CRANK ARM



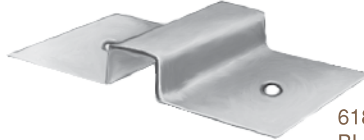
608 SWIVEL



605 VENTLOK INSIDE  
END BEARING



U-BOLT



618 DAMPER  
BLADE CLIP

## CRANK ARMS

### 604 SHORT CRANK ARMS

These crank arms are made to accommodate  $\frac{3}{8}$ " or  $\frac{1}{2}$ " round rod. The distance from the center of the hole to the end of the slot is  $2\frac{7}{8}$ ". When ordering, be certain to specify hole size.

*Weight per 100, 20 lbs.*

### 606 LONG CRANK ARMS

These crank arms are made to accommodate  $\frac{3}{8}$ " or  $\frac{1}{2}$ " round rod. The distance from the center hole to the end of the slot is  $4\frac{5}{8}$ ". When ordering, be certain to specify hole size. *Weight per 100, 24 lbs.*

## SWIVELS

### 608 SWIVELS

These swivels can be used with both the short and the long crank arms. This swivel will accommodate both  $\frac{1}{4}$ " and  $\frac{5}{16}$ " diameter rods which are firmly held by a  $\frac{5}{16}$ " locking set screw.

*Weight per 100, 8 lbs.*

## END BEARINGS

### 605 INSIDE END BEARING

This die cast piece is designed for use in insulated ducts. When it is riveted or screwed to the inside of a duct, a  $\frac{3}{8}$ " square damper rod will turn easily in the hole. The  $1\frac{3}{8}$ " height of the die casting prevents the damper blade from damaging the insulation. *Weight per 100, 16 lbs.*

## U-BOLTS AND CLIPS

### 615 U-BOLTS $\frac{3}{8}$ ", 616 U-BOLTS $\frac{1}{2}$ "

Zinc plated bolts for fastening  $\frac{3}{8}$ " or  $\frac{1}{2}$ " square rod to damper blades. *Weight per 500, 11 lbs.*

U-Bolts now available in stainless steel.

### 618 DAMPER BLADE CLIP $\frac{3}{8}$ "

This piece is frequently preferred in place of U-bolts for welding  $\frac{3}{8}$ " square rods to damper blades. *Weight per 500, 21 lbs.*

# CLAMPS



670 CLAMPS

## **670 CLAMPS FOR ATTACHING FLEXIBLE TUBING TO DUCT WORK**

These stainless steel clamps, furnished in 1 inch increments ranging from 3" to 18" in diameter, are generally used to attach flexible tubing to branch take-offs. The clamp is tightened by the worm gear action of the deeply slotted hexhead cadmium plated screw. Two or more clamps may be connected together for diameters over 18".

# Damper Blade Hardware

## 4000 VENTLOK STANDARD PARALLEL BLADE DAMPER HARDWARE

A set of #4000 Standard Hardware consists of the following:

1. One #401 Center Bracket made from 16 gauge zinc-plated steel, with brass pivot pin and 1/4"-20 square head set screw.
2. Two #402 Bearing Pins 2 1/2" long, made from 1/2" cold rolled zinc-plated rod.
3. Two #403 Bearing Straps made from 3/16" cold rolled zinc-plated steel fitted with 1/4"-20 square head set screws.
4. Two #404 Self-Lubricating Bushings made from bronze to fit 1/2" I.D., 5/8" O.D.

You may order by sets or individual parts. *Weight per 100 sets, 75 lbs.*



401 STANDARD  
CENTER BRACKET

## 4100 VENTLOK SPRING PIN PARALLEL BLADE DAMPER HARDWARE

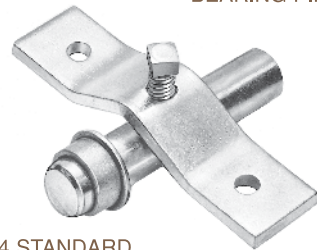
This hardware is identical to our Standard Hardware described above, except our #410 VENTLOK Spring Pin Center Bracket is substituted for the #401 Standard Center Bracket and Brass Pivot Pin. You may order by sets or individual parts. *Weight per 100 sets, 75 lbs.*



410 SPRING  
PIN CENTER  
BRACKET

## 4000SS AND 4100SS VENTLOK STAINLESS STEEL PARALLEL BLADE DAMPER HARDWARE

This hardware is identical to our standard and spring pin hardware, except that every metal part including the set screws is made from stainless steel. Our #405 nylon bushings are furnished in place of self-lubricating bushings. You may order by sets or individual parts. *Weight per 100 sets, 75 lbs.*



402 STANDARD  
BEARING PIN

## 4200 SMACNA-ACCEPTED DAMPER BLADE HARDWARE

This hardware is similar to our standard hardware, except the center bracket is fitted with a stainless steel pivot pin and set screw, the bearing pins are 4" long and the bearing straps are slightly different. *Weight per 100 sets, 88 lbs.*

404 STANDARD  
SELF-LUBRICATING  
BUSHING

403 STANDARD  
BEARING STRAP

### 420 SMACNA-Accepted Center Bracket

Our #401 Standard Center Bracket equipped with a Stainless Steel Pivot Pin & Set Screw. *Weight per 100, 24 lbs.*

**421 Stainless Steel Pivot Pin and Set Screw ONLY without Center Bracket**  
*Weight per 100, 82 lbs.*

**422 SMACNA-Accepted Bearing Pins 4" Long** *Weight per 100 pairs, 44 lbs.*

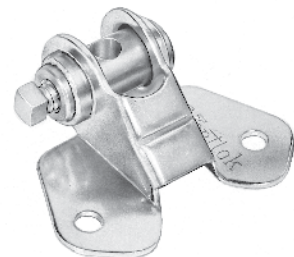
**423 SMACNA-Accepted Bearing Straps with Set Screw** *Weight per 100 pairs, 19 lbs.*

**424 SMACNA-Accepted Self-Lubricating Bushings** *Weight per 100 pairs, 2 lbs.*

**451 SMACNA-Accepted Coil Spring** *Weight per 100, 4 lbs.*

**452 SMACNA-Accepted Latch** *Weight per 100, 28 lbs.*

**453 SMACNA-Accepted Torsion Spring** *Weight per 100, 2 lbs.*



440 SMALL  
CENTER BRACKET



# Narrow Blade Damper Hardware

## 4300 VENTLOK NARROW BLADE DAMPER HARDWARE

This hardware is very useful when damper blades are too small to accommodate standard size hardware. A set of Narrow Blade Hardware consists of the following:

1. One #430 reduced size center bracket for small blades, fitted with a brass pivot pin and set screw.
2. Two #402 Bearing Pins, 2½" long made from ½" cold rolled, zinc-plated rod.
3. Two #431 reduced size bearing straps with set screws for small blades.
4. Two #404 Self-Lubricating Bushings to fit ½" diameter rod.

You may order by sets or individual parts. *Weight per 100 sets, 36 lbs.*

### 430 Narrow Blade Center Brackets with Brass Pivot Pins and Set Screws

*Weight per 100, 16 lbs.*

### 431 Narrow Blade Bearing Straps with Set Screws

*Weight per 100, 8 lbs.*



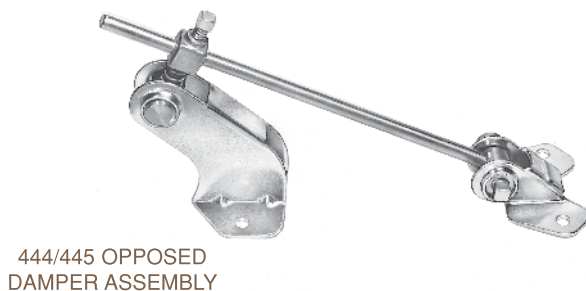
# Opposed Damper Assemblies

## 400 VENTLOK SELF-POSITIONING OPPOSED DAMPER LINKAGE

This assembly consists of a high bracket and a low bracket, both made from ¾" steel, a ¼" threaded rod, and two brass clevises with locknuts. Simple instructions for installation are included. *Weight per 100, 75 lbs.*

## 444 OPPOSED BLADE ASSEMBLY

This assembly consists of a Spring Pin Center Bracket and a #440 Small Center Bracket. It must be borne in mind that this linkage cannot be used on dampers where the blade centers are less than 5½ inches apart. It should be noted that this assembly, does not include the ¼" rod necessary to link the two blades, however ¼" rod is available and shown on page 18 under style #418. *Weight per 100, 36 lbs.*



## 445 STAINLESS STEEL OPPOSED BLADE ASSEMBLY

This assembly is identical to the standard #444 Opposed Blade Assembly described above, except that all steel parts are made from stainless steel. The only part not made from stainless steel is the die cast pivot post in the spring pin center bracket.

*Weight per 100, 44 lbs.*

# Damper Blade Hardware Accessories

## 416 SQUARE ACETAL BEARING $\frac{3}{8}$ " OR $\frac{1}{2}$ " ROD

Weight per 100, 2 lbs.

## 411 BEARING PINS 6" LONG $\frac{1}{2}$ " ROUND

Weight per 100, 36 lbs.

## 412 BEARING PINS 6" LONG $\frac{1}{2}$ " SQUARE TO $\frac{1}{2}$ " ROUND

Weight per 100, 40 lbs.

## 413 BALL BEARINGS

To fit  $\frac{1}{2}$ " diameter bearing pins as a substitute for bushings.

Weight per 100, 8 lbs.

## 414 BEARING PINS 2 $\frac{1}{2}$ " LONG

Made from  $\frac{7}{16}$ " round cold rolled zinc plated rod. Weight per 100, 11 lbs.

## 415 SELF-LUBRICATING BUSHINGS

With an inside diameter of  $\frac{7}{16}$ " and outside diameter of  $\frac{5}{8}$ ". Weight per 100, 3 lbs.

## 418 $\frac{1}{4}$ " DAMPER ROD

Available in 5 foot lengths, zinc plated, minimum order 10 pieces.



BEARING PINS

SQUARE  
ACETAL  
BEARING



BALL BEARING

# Separate Components of Damper Blade Hardware

## 40 STANDARD CENTER BRACKET WITHOUT PIVOT PINS OR SET SCREWS

Weight per 100, 19 lbs.

## 41 BRASS PIVOT PINS WITH SET SCREWS ONLY WITHOUT CENTER BRACKET

Weight per 100, 6 lbs.

## 42 BRASS CLEVISES WITH NUTS & BOLTS FOR 400 ASSEMBLY

Weight per 100, 14 lbs.

## SET SCREWS ONLY

Weight per 100, 4 lbs

## Fusible Links

All VENTLOK Fusible links are listed by Underwriter's Laboratories, and available in two sizes. The small link having a five-pound load capacity, measures  $\frac{7}{8}$ " between hole centers. The larger link, having a fifteen-pound load capacity, measures  $1 \frac{3}{4}$ " between centers.

**610 FUSIBLE LINK 165° SMALL SIZE** Weight per 100, 2 lbs.

**611 FUSIBLE LINK 165° LARGE SIZE** Weight per 100, 6 lbs.

**612 FUSIBLE LINK 212° SMALL SIZE** Weight per 100, 2 lbs.

**613 FUSIBLE LINK 212° LARGE SIZE** Weight per 100, 5 lbs.



611  
FUSIBLE  
LINK

612  
FUSIBLE  
LINK

# Ventlok® High Speed Twist Drills

Our stub or short length drills are ground from a solid hardened high speed blank on the most modern special grinding equipment. The 135° split point feature assures quick action and fast penetration. Their rugged construction allows you to drill more holes with an absolute minimum of breakage.

**IMPORTANT:** *The following drills are carried in stock, but we are able to furnish a complete line of drills of all types.*

## STRAIGHT SHANK STUB DRILLS

Packed 10 to a package.

Drill	Overall Length
7/64"	1 13/16"
1/8"	1 7/8"
#30	1 15/16"
9/64"	1 15/16"
5/32"	2 1/16"
#20	2 1/8"
11/64"	2 1/8"
3/16"	2 3/16"
#11	2 1/4"
#7	2 1/4"
13/64"	2 1/4"
7/32"	2 3/8"
#1	2 7/16"
1/4"	2 1/2"
9/32"	2 11/16"
5/16"	2 13/16"
3/8"	3 1/8"
7/16"	3 7/16"
1/2"	3 3/4"



## 176P LARGE-SIZED DRILLS WITH 1/4" SHANK

Packed 1 per tube.

Drill	Overall Length
5/16"	3 7/8"
3/8"	4 1/4"
7/16"	4 5/8"
1/2"	5 3/32"

## CARBIDE TIPPED FAST SPIRAL MASONRY DRILLS

Packed 1 per tube.

Drill	Overall Length
1/8"	3"
3/16"	3"
1/4"	4"
5/16"	4"
3/8"	4"
7/16"	4"
1/2"	4"

# Ventlok® Magnetic Screw Chucks

**701** 1/4" Round Shank Chucks, 1 3/4" long

**702** 1/4" Hex Shank Chucks, 1 3/4" long

**703** 5/16" Round Shank Chucks, 1 3/4" long

**704** 5/16" Hex Shank Chucks, 1 3/4" long

**710** 3/8" Hex Shank Chucks, 1 7/8" long

**720** 1/4" Long Shank Screw Gun Chucks, 2 1/2" long

**730** 5/16" Long Shank Screw Gun Chucks, 2 1/2" long

# Regulator Sets For Round Dampers

Our #800 and #810 sets provide an economical and easy means to assemble a round damper blade. These sets are designed for damper blades no thicker than 24 gauge.

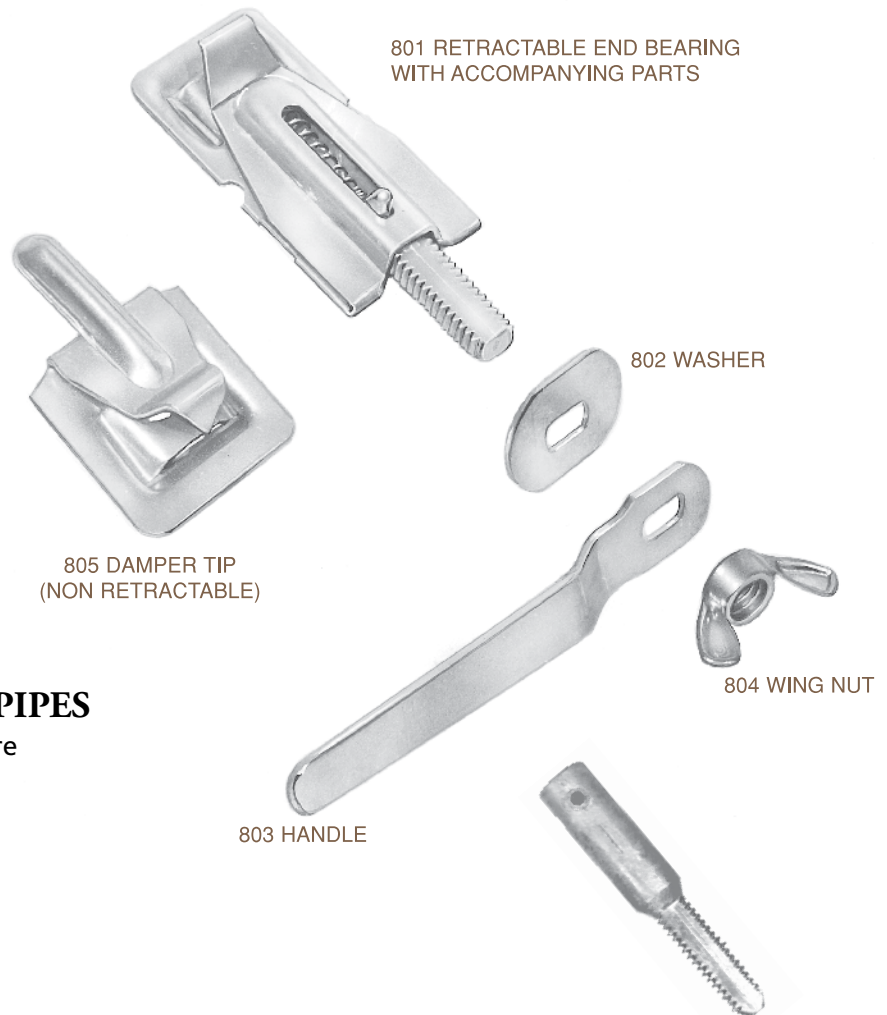
## 800 DAMPER SET FOR ROUND PIPES

A set of #800 Round Damper Blade Hardware consists of the following:

1. Two #801 Retractable End Bearings
2. One #802 Washer
3. One #803 Handle
4. One #804 Wing Nut

You may order by sets or individual parts.

Weight per 100 sets, 19 lbs.



## 810 DAMPER SET FOR ROUND PIPES

A set of #810 Round Damper Blade Hardware consists of the following:

1. One #801 Retractable End Bearing
2. One #802 Washer
3. One #803 Handle
4. One #804 Wing Nut
5. One #805 Damper Blade Tip

You may order by sets or individual parts.

Weight per 100 sets, 16 lbs.

## 806 DAMPER EXTENSION FOR INSULATION

OUTSIDE ILLINOIS CALL TOLL FREE 800-621-1207  
INSIDE ILLINOIS CALL 773-775-4477 FAX 773-775-5065  
[www.ventfabrics.com](http://www.ventfabrics.com)

**VENTFABRICS**  
I N C O R P O R A T E D

5520 North Lynch Avenue • Chicago, Illinois 60630-1483

VENTFABRICS, INC. CHICAGO, ILLINOIS 1-800-621-1207 [www.ventfabrics.com](http://www.ventfabrics.com)